

# SBS 2011 TIPS & TRICKS

Elvis Guštin  
EM-Soft sistemi d.o.o.

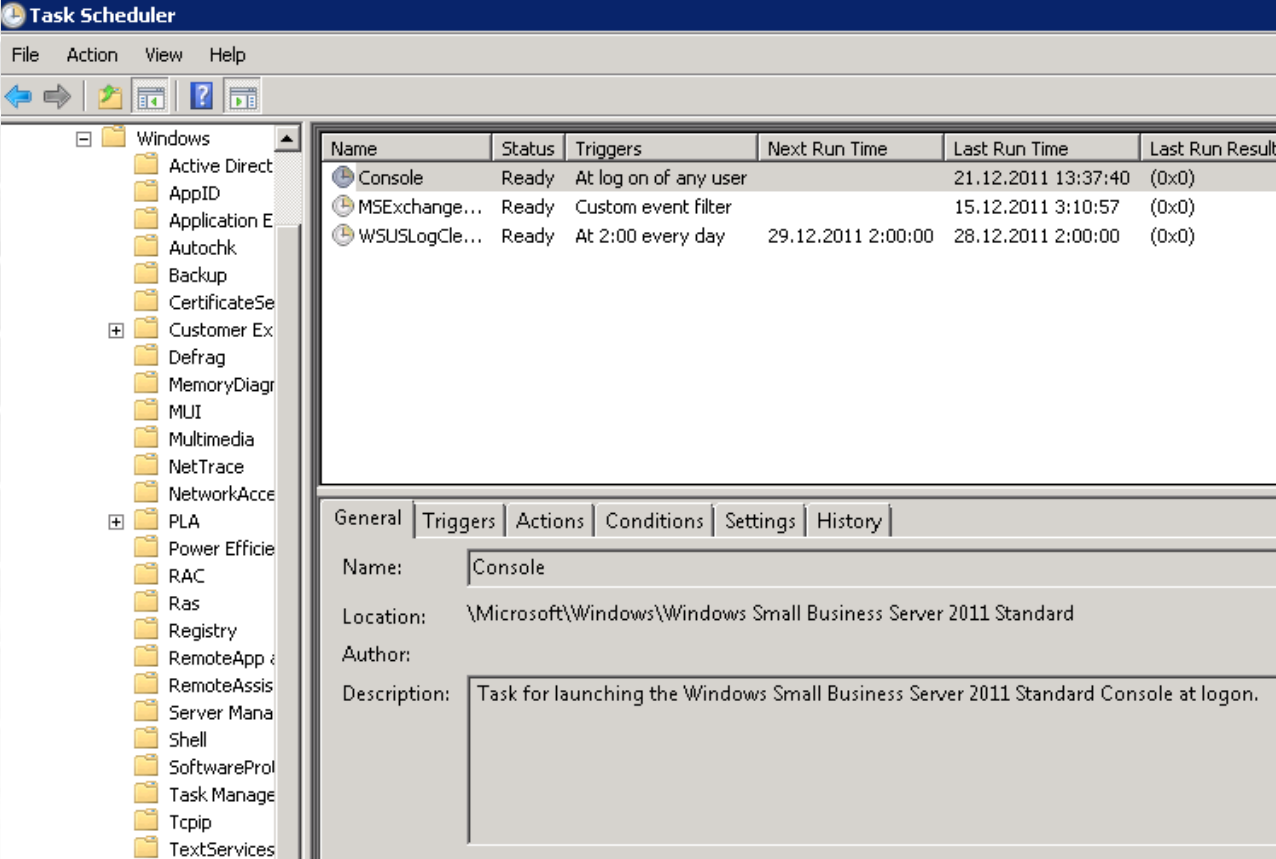


# Agenda

- SBS Konzola
- WSUS Vzdrževanje
- Dopolnitve SharePoint
- Vzdrževanje - Monitoring

# SBS Konzola

- Kje se starta? Zakaj se samodejno zažene



The screenshot shows the Windows Task Scheduler interface. The left pane displays a tree view of system folders, with 'Windows' expanded. The main pane shows a table of tasks. The 'Console' task is selected, and its details are shown in the bottom pane.

| Name           | Status | Triggers              | Next Run Time      | Last Run Time       | Last Run Result |
|----------------|--------|-----------------------|--------------------|---------------------|-----------------|
| Console        | Ready  | At log on of any user |                    | 21.12.2011 13:37:40 | (0x0)           |
| MSEExchange... | Ready  | Custom event filter   |                    | 15.12.2011 3:10:57  | (0x0)           |
| WSUSLogCle...  | Ready  | At 2:00 every day     | 29.12.2011 2:00:00 | 28.12.2011 2:00:00  | (0x0)           |

**Task Details:**

- Name: Console
- Location: \Microsoft\Windows\Windows Small Business Server 2011 Standard
- Author:
- Description: Task for launching the Windows Small Business Server 2011 Standard Console at logon.

# SBS Konzola

- Kako zagnati v „Advance“ načinu
  - Da zagon s stikalom /a (console /a)
- Kaj pridobim?
  - Users and computers – dostop do AD
  - Network – Management DNS, DHCP in certifikatov

# SBS Konzola

- Si lahko konzolo priredim glede na moje želje?

```
<?xml version="1.0" encoding="utf-8" ?>
<configuration>
  <configSections>
    <section name="wssg.external" type="Microsoft.WindowsServerSolutions.Configuration.ExternalConfigurationSection, WssgCommon"/>
    <section name="GettingStartedListExtension" type="Microsoft.WindowsServerSolutions.Console.Shared.ExtendedTasksConfigSectionHandler, Console"/>
    <section name="SafeModeSettings" type="Microsoft.WindowsServerSolutions.Console.Shared.SafeModeSettingsSectionHandler, Console" />
  </configSections>

  <runtime>
    <generatePublisherEvidence enabled="false"/>
  </runtime>

  <!-- The following demonstrates how to add extended group tasks to homepage-->
  <GettingStartedListExtension groupCaption="Dodane storitve">
    <task name="Launch Router config" path="http://192.168.16.1" description="Spletni dostop do Usmerjevalnika" />
  </GettingStartedListExtension>

  <startup useLegacyV2RuntimeActivationPolicy="true" />
  <!-- Settings to disable pages from loading in safe mode -->
  <SafeModeSettings safeMode="false">
    <HomePage enabled="true"/>
    <UsersPage enabled="true"/>
    <UserRolesPage enabled="true"/>
    <GroupsPage enabled="true"/>
    <NetworkPage enabled="true"/>
    <BackupPage enabled="true"/>
    <ServerStoragePage enabled="true"/>
    <ComputerPage enabled="true"/>
    <DevicePage enabled="true"/>
    <SharingPage enabled="true"/>
    <WebsitesPage enabled="true"/>
    <UpdatesPage enabled="true"/>
    <LicensingPage enabled="true"/>
    <LicenseHistoriesPage enabled="true"/>
    <ReportPage enabled="true"/>
    <SecurityPage enabled="true"/>
  </SafeModeSettings>

  <wssg.external fileName=".\\logging.config"/>
</configuration>
```

# WSUS – Kaj z bazo in popravki

- Ste kdaj pomislili kako vam raste število popravkov?
- Kaj pa baza (susdb)? Ste jo kdaj počistili?
- Nekaj koristnih povezav:
  - <http://wsus.codeplex.com/>
  - <http://gallery.technet.microsoft.com/ScriptCenter/fd39c7d4-05bb-4c2d-8a99-f92ca8d08218/>
  - <http://gallery.technet.microsoft.com/scriptcenter/6f8cde49-5c52-4abd-9820-f1d270ddea61>
- Skripte za zagon so objavljene na blogu!

# WSUS – SQL Nastavitve

- Če gledate porabo RAM-a, boste ugotovili, da se vam veča
- Poglejte procese, morda je kriv SQL (Microsoft##SSEE)
- Omejite mu Memory!!! (1024MB)

```
[System.Reflection.Assembly]::LoadWithPartialName('Microsoft.SqlServer.SMO') | out-null
$s = New-Object ('Microsoft.SqlServer.Management.Smo.Server') "ServerName"
# $s.Configuration.MinServerMemory.ConfigValue = 1024
$s.Configuration.MaxServerMemory.ConfigValue = 1024
$s.Configuration.Alter()
```

# WSUS – Opcijski popravki

- Vas moti, da se opsijski popravki ne instalirajo samodejno?
- Nastavitev je le group policy

Computer Configuration

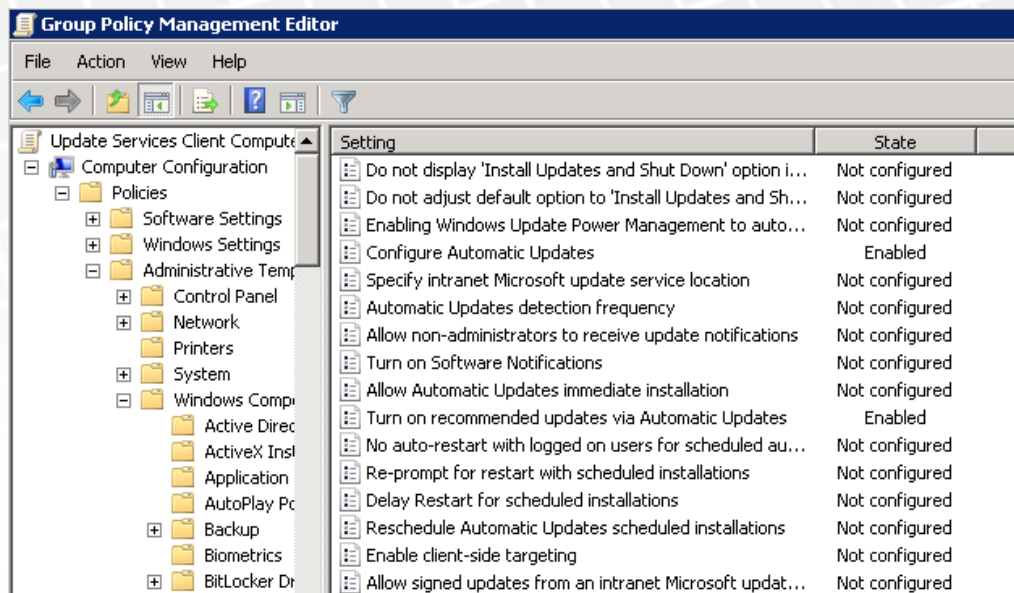
Policy

Administrative Templates

Windows Components

Windows Updates

**Turn On Racommended Updates Via Automatic Updates = Enabled**





# SharePoint – Velike datoteke

- Ali veste koliko je privzeta omejitev Upload-a?
- Če se vam zdi premajhna, jo seveda lahko povečate
  - [SharePoint Central Administration > Application Management > Manage Web Applications > General Settings.](#)
  - Tu lahko nastavite tudi par drugih zanimivih zadev (Quota, Timeout, Časovni pas, Browser File Handling, ...)
- Ne pozabi na Web.config!!!
  - `C:\Program Files\Windows Small Business Server\Bin\WebApp\InternalWebSite`
  - `<requestLimits maxAllowedContentLength="104857600" />`
  - Vpisana vrednost naj bo večja kot v CentralAdmin!!! (Zaradi napak)



# SharePoint in PDF (ali drugi tipi)

- Vas moti, da večina ne Microsoftovih dokumentov nima ikon?
- Ikone se da v Foundation rešit, iskanja na žalost NE
  - Prezimate ikono (17x17) <http://www.adobe.com/misc/linking.html>
  - Kopirajte v C:\Program Files\Common Files\Microsoft Shared\Web Server Extensions\14\TEMPLATE\IMAGES
  - Odprite datoteko C:\Program Files\Common Files\Microsoft Shared\Web Server Extensions\14\TEMPLATE\XML\DOCICON.XML
  - V sekcijo <ByExtension> dodajte naslednjo vrstico:  
<Mapping Key=„pdf" Value="icpdf.gif"/>

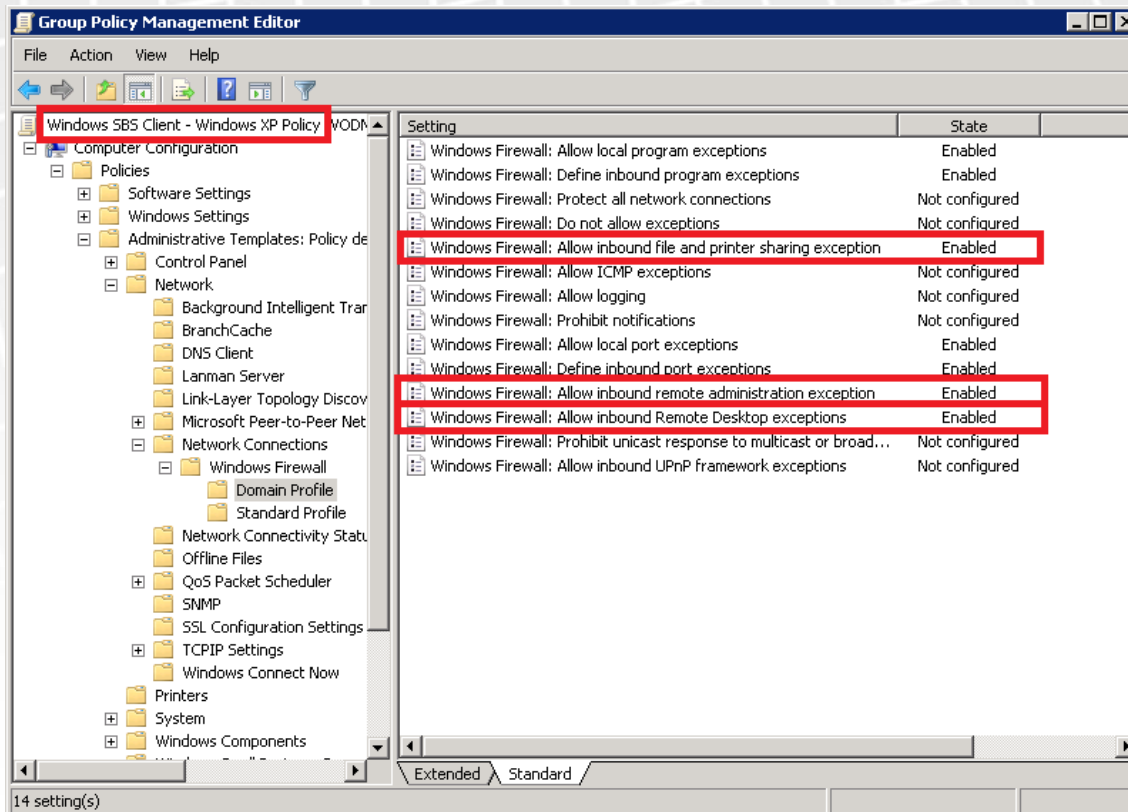
# SharePoint in Service Packi

- Včasih, po instalaciji SP-ja se dogajajo čudne stvari
  - Strežnik ima status „Critical“ na Other Alerts
  - Ne deluje Backup
  - SharePoint ne najde konfiguracijske baze
- Vzrok je nepravilni zagon PSCONFIG
- Napako odpravimo tako, da ga še enkrat zaženemo.
  - Za test: **(get-spserver \$env:computename).NeedsUpgrade**
  - **PSConfig.exe -cmd upgrade -inplace b2b -force -cmd applicationcontent -install -cmd installfeatures** iz mape **C:\Program Files\Common Files\Microsoft Shared\Web Server Extensions\14\BIN**

# Napake – Error 10009 (XP)

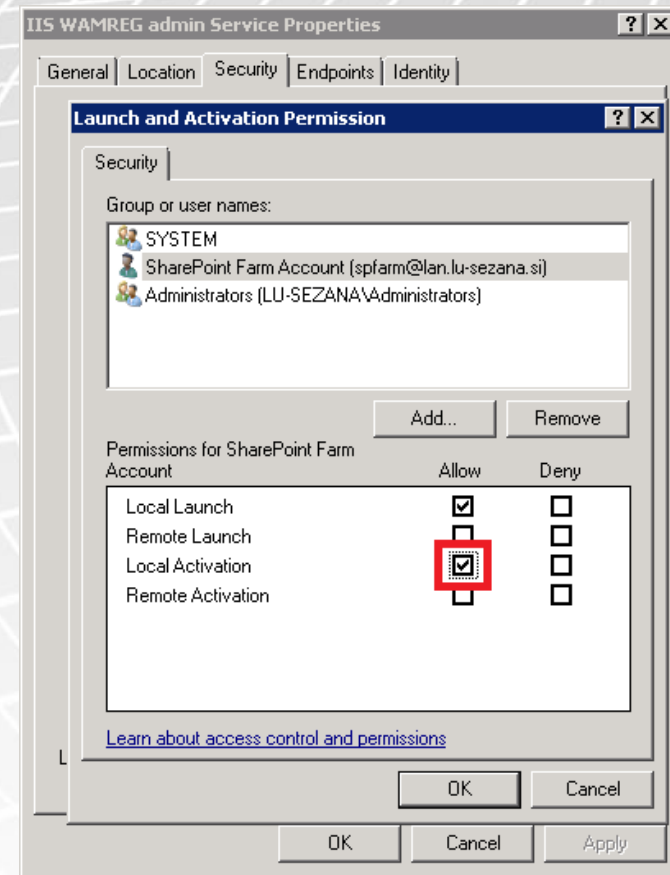
DCOM was unable to communicate with the computer SERVER.DOMAIN.LAN using any of the configured protocol

- Predlagam popravilo z GP
  - Odprite **Policy Windows SBS Client – Windows XP**
  - Vpišite vrednosti **localhost, IP\_Serverja (!)** Pazi na funkcionalnost



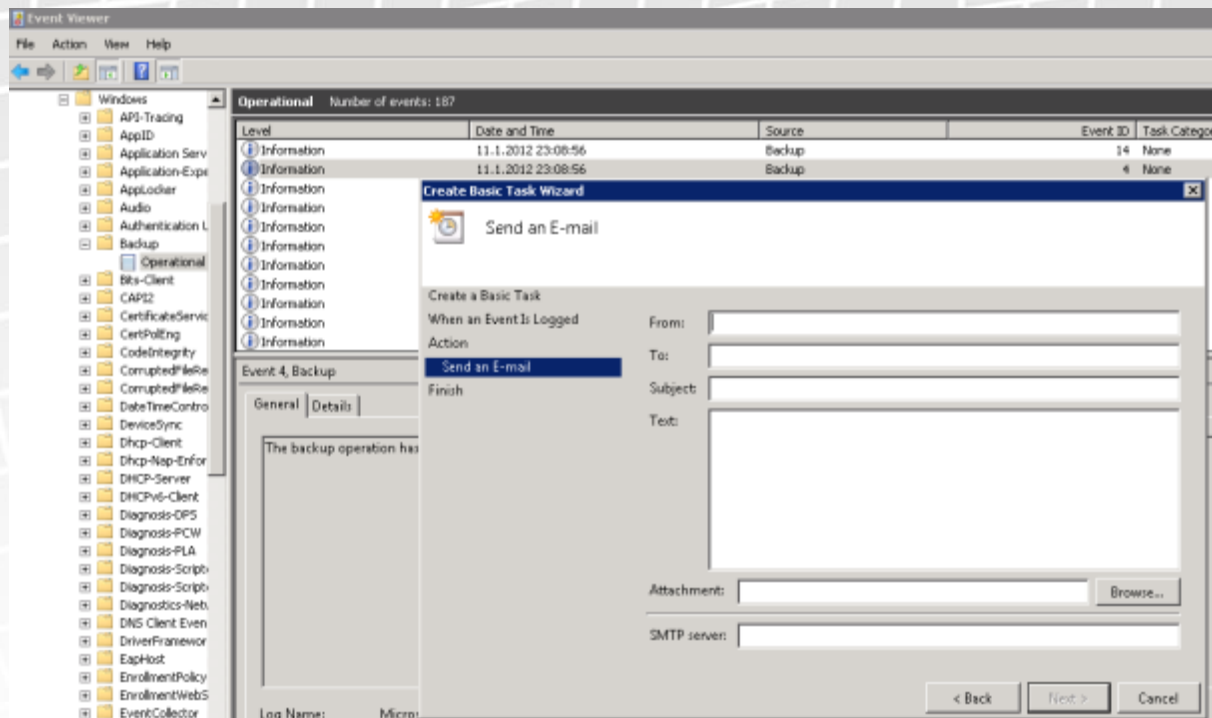
# Napake – Error 10016

- Verjetno je **IIS WAMREG Admin!**
- Dobite ključ v registru in zamenjajte pravice (**Owner, Administrators = Full control**) (HKEY\_CLASSES\_ROOT\AppID\{61738644-F196-11D0-9953-00C04FD919C1})
- V Component Services dodajte **SharePoint Farm Accounts** pravico **Local Activation**



# Poročanje o Eventih (Backup)

- Velikokrat pride prav takojšnje obvestilo o (ne)delovanju servisa
- Postavite si, da vam strežnik pošlje Alert!



- PS: Kaj pa Exchange servisi?



# VPRAŠANJA?



Elvis Guštin

[elvis@em-soft.si](mailto:elvis@em-soft.si)

<http://www.em-soft.si/blog/elvis>